

*Progettazione, ricerca e sviluppo imballaggi*  
*Design, research and development of packaging*

## INDICATORI D'URTO SHOCKSTICKER INDICATORI DI RIBALTAMENTO TILTSTICKER E TILTSTICKER PLUS



Gli indicatori d'urto SHOCKSTICKER rilevano e registrano gli **urti** e l'**errata movimentazione** durante il **trasporto** di prodotti fragili, sensibili o tarati.

Le **etichette** SHOCKSTICKER sono dispositivi contenenti un liquido rosso in sospensione. Se il dispositivo viene sottoposto ad un impatto superiore ad uno specifico **livello G**, l'urto provoca la fuoriuscita del liquido rosso, ben visibile.

Questi prodotti possono essere utilizzati per **prevenire i danni** su ogni tipo di merce che richiede una certa cura **durante il trasporto e la movimentazione**.

#### **Prodotti disponibili:**

Indicatori d'urto SHOCKSTICKER disponibili in cinque livelli di sensibilità, indicati dai cinque diversi colori. L'attivazione indica un urto oltre il livello predeterminato.

#### **Principali applicazioni:**

- Componenti per automotive
- Apparecchiature commerciali
- Semiconduttori
- Hard disk dei computer
- Attrezzatura da laboratorio
- Supporti di archiviazione (hard disk, nastri di registrazione, ecc.)
- Prodotti in vetro
- Componenti elettronici
- Arredamento
- Ecc.

Gli **indicatori d'urto SHOCKSTICKER** sono riconosciuti dai principali enti di certificazione per il valore aggiunto fornito alla qualità dei vostri prodotti.







1. Determine the Volume of your shipping container in cubic feet(height\*width\*depth)
2. Determine the total weight, including the item shipping, all packing material and the shipping container itself

Weight \ Volume	0-.03m3(0-1ft3)	.03-.14m3 (1-5ft3)	.14-.42m3 (5-15ft3)	.42-1.42m3 (15-50ft3)	1.42+m3 (50+ft3)
0-4.56Kg (0-10lb)	100g(L30) (GREEN)	100g(L30) (GREEN)	75g(L35) (ORANGE)	75g(L35) (ORANGE)	50g(L47) (RED)
4.56-11.34Kg (10-25lb)	100g(L30) (GREEN)	75g(L35) (ORANGE)	75g(L35) (ORANGE)	50g(L47) (RED)	50g(L47) (RED)
11.34-22.68Kg (25-50lb)	75g(L35) (ORANGE)	75g(L35) (ORANGE)	50g(L47) (RED)	50g(L47) (RED)	37g(L55) (PURPLE)
22.68-45.36Kg (50-100lb)	75g(L35) (ORANGE)	50g(L47) (RED)	50g(L47) (RED)	37g(L55) (PURPLE)	37g(L55) (PURPLE)
45.36-113.4Kg (100-250lb)	50g(L47) (RED)	50g(L47) (RED)	37g(L55) (PURPLE)	37g(L55) (PURPLE)	25g(L65) (YELLOW)
113.4-453.6Kg (250-1000lb)	50g(L47) (RED)	50g(L47) (RED)	37g(L55) (PURPLE)	25g(L65) (YELLOW)	25g(L65) (YELLOW)
453.6+Kg (1000+lb)	---	37g(L55) (PURPLE)	25g(L65) (YELLOW)	25g(L65) (YELLOW)	25g(L65) (YELLOW)
Expected drop height for shocksticker activation					
Color Label	25g(L65) (YELLOW)	37g(L55) (PURPLE)	50g(L47) (RED)	75g(L35) (ORANGE)	100g(L30) (GREEN)
<45Kg	---	0.3-0.48M (12-18")	0.3-0.6M	0.6-0.91M (24-36")	0.91M up (36"+)
>45Kg	0.15-0.3M (6-12")	0.2-0.41M (8-16")	0.3-0.48M (12-18")	---	---

- 1.Duration :0.5(S)-50ms
- 2.Tolerance: ±15%
- 3.Operating Temperature :-20°C to +80°C
- 4.Size:94.9\*94.9mm
- 5.lable:25g,37g,50g,75g,100g
- 6.Shelf life:2years(20°C/68°F)

DETERMINARE LA LINEA CORRISPONDENTE AL PESO DEL VOSTRO COLLO

DETERMINARE LA COLONNA CHE CORRISPONDE AL SUO VOLUME

GUARDARE ALL'INTERSEZIONE DELLA LINEA E DELLA COLONNA IL COLORE DEL MODELLO ADEGUATO ALLE VOSTRE ESIGENZE



Gli indicatori d'inclinazione **TiltSticker** rilevano e **registrano un'inclinazione eccessiva della merce** che deve rimanere in posizione verticale. Per attivare il dispositivo è sufficiente rimuovere l'adesivo di protezione. Dopo l'applicazione sul contenitore di spedizione, il prodotto non può essere inclinato senza che ne risulti una prova indiscutibile di errata movimentazione ed uno speciale meccanismo non ne permette la riattivazione. I modelli **TiltSticker** e **TiltSticker Plus** rappresentano soluzioni affidabili ed economiche per prevenire danni alla merce in transito.

- **TiltSticker**: questo indicatore diventa di colore rosso se il prodotto su cui è applicato viene inclinato o completamente capovolto — non viene invece attivato dalle normali movimentazioni e dai decolli aerei.
- **TiltSticker Plus**: questo indicatore fornisce un monitoraggio a 360°: indica l'esatta angolatura di inclinazione o un capovolgimento completo **TiltSticker Plus** è dotato di un'etichetta di accompagnamento sulla quale è possibile riportare i dati relativi all'inclinazione da non superare per non danneggiare il prodotto.

**Principali applicazioni:** apparecchiature commerciali, grandi sistemi di computer rack, apparecchiature per telecomunicazioni, compressori, batterie industriali, contenitori per sostanze pericolose, armadi elettronici, componenti per auto motive, e altro ancora.

#### Vantaggi:

- Riduzione dei danni durante il trasporto
- Prevenzione dall'inclinazione e dal capovolgimento, con un buon rapporto costo-prestazione
- Prova indiscutibile di inclinazione
- Deterrente visivo per evitare una movimentazione impropria
- Applicazione diretta sulla merce o sull'imballo per una chiara visibilità
- Garanzia di una rintracciabilità delle responsabilità per tutti coloro che si occupano della movimentazione dei prodotti
- Avviso ai destinatari di ispezionare il contenuto prima dell'accettazione
- Protezione e riduzione dei reclami
- Garanzia di qualità del prodotto
- Aumento della soddisfazione del cliente e maggiore visibilità commerciale

#### Caratteristiche:

- Rilevazione dell'inclinazione per un'ampia serie di tipi e dimensioni di prodotto
- Facile installazione e attivazione con la rimozione dell'adesivo
- Design antimanomissione per evitare di nascondere l'attivazione con prova chiara di interferenza
- Immunità nei confronti delle normali condizioni di movimentazione e angolatura di decollo per gli aerei
- Guarnizione di tenuta a prova di umidità per un utilizzo in applicazioni umide, come trasporti oceanici
- L'indicatore di inversione registra un ribaltamento completo (solo **TiltSticker Plus**)

#### ATTENZIONE:

Se il **TiltSticker** è rosso, accettate **SEMPRE** la consegna.

Segnalate questo particolare sul documento di trasporto ed ispezionate immediatamente il collo per rilevare l'eventuale danneggiamento.



## TEST REPORT

Mechanical & Hardgoods Laboratory

Report No. : TH50205A/2016

Page : 1 of 5

Date : MAY 27, 2016

### SIANG GU CO., LTD.

NO. 138 Siyuan Street, Bade Dist., Taoyuan City 334, Taiwan

#### The following merchandise was submitted and identified by the applicant as:

Production Description: SHOCK STICKER

Style/Item No.:  
Yellow 25g(L65)/NO:SG0201345-SG0201349 (5 pcs)  
Purple 37g(L55)/NO:SG0111849-SG0111853 (5 pcs)  
Red 50g(L47)/NO:SG0130407-SG0130411 (5 pcs)  
Orange 75g(L35)/NO:SG0121299-SG0121303 (5 pcs)  
Green 100g(L30)/NO:SG0103493-SG0103497 (5 pcs)

Sample Quantity: 25 pcs

#### We have tested the submitted sample(s) as requested and the following results were obtained:

Test Requested: Drop Test.

Test Method & Test Result: --See following Sheet(s)--

Date of Receipt: MAY 19, 2016

Testing Period: MAY 19, 2016 ~ MAY 27, 2016

--- See Next Page ---

Signed for and on behalf of  
SGS Taiwan Ltd.



Kaini Chen  
Team Leader

Testing Place: No. 9, 14th Rd., Taichung Ind. Park, Taichung City 40755, Taiwan

This document is issued by the Company subject to its General Conditions of Service printed overleaf, available on request or accessible at <http://www.sgs.com/en/Terms-and-Conditions.aspx> and, for electronic format documents, subject to Terms and Conditions for Electronic Documents at <http://www.sgs.com/en/Terms-and-Conditions/Terms-e-Document.aspx>. Attention is drawn to the limitation of liability, indemnification and jurisdiction issues defined therein. Any holder of this document is advised that information contained hereon reflects the Company's findings at the time of its intervention only and within the limits of client's instruction, if any. The Company's sole responsibility is to its Client and this document does not exonerate parties to a transaction from exercising all their rights and obligations under the transaction documents. This document cannot be reproduced, except in full, without prior written approval of the Company. Any unauthorized alteration, forgery or falsification of the content or appearance of this document is unlawful and offenders may be prosecuted to the fullest extent of the law. Unless otherwise stated the results shown in this test report refer only to the sample(s) tested.

## TEST REPORT

Mechanical & Hardgoods Laboratory

Report No. : TH50205A/2016

Page : 2 OF 5

### Test Method & Test Result:

- Test Method: a. Stick the sample on the specific position of the wooden container and drop freely from the specific height.  
 b. After testing, inspect visually for whether the color of the indicator of the sample change or not °

Note- i. Test environment: (23+-3)°C , (55+-20)%RH

ii. Wooden container and weight were provided by the applicant

Wooden container 1: L1000\*W800\*H800 mm (weight inside 60 kgw)

Wooden container 2: L600\*W500\*H500 mm (weight inside 30 kgw)

### Test Result:

Sample (No.)	Drop Height	Result	Note
Yellow 25g(L65) / SG0201345	30 cm	Color changed(see photo "H")	Wooden container 1
Yellow 25g(L65) / SG0201346		Color changed(see photo "H")	
Yellow 25g(L65) / SG0201347		Color changed(see photo "H")	
Yellow 25g(L65) / SG0201348		Color changed(see photo "H")	
Yellow 25g(L65) / SG0201349		Color changed(see photo "H")	
Purple 37g(L55) / SG0111849	40 cm	Color changed(see photo "J")	Wooden container 1
Purple 37g(L55) / SG0111850		Color changed(see photo "J")	
Purple 37g(L55) / SG0111851		Color changed(see photo "J")	
Purple 37g(L55) / SG0111852		Color changed(see photo "J")	
Purple 37g(L55) / SG0111853	60 cm	Color changed(see photo "J")	Wooden container 2
Red 50g(L47) / SG0130407		Color changed(see photo "L")	
Red 50g(L47) / SG0130408		Color changed(see photo "L")	
Red 50g(L47) / SG0130409		Color changed(see photo "L")	
Red 50g(L47) / SG0130410		Color changed(see photo "L")	
Red 50g(L47) / SG0130411	90 cm	Color changed(see photo "L")	Wooden container 2
Orange 75g(L35) / SG0121299		Color changed(see photo "N")	
Orange 75g(L35) / SG0121300		Color changed(see photo "N")	
Orange 75g(L35) / SG0121301		Color changed(see photo "N")	
Orange 75g(L35) / SG0121302		Color changed(see photo "N")	
Orange 75g(L35) / SG0121303	120 cm	Color changed(see photo "N")	Wooden container 2
Green 100g(L30) / SG0103493		Color changed(see photo "P")	
Green 100g(L30) / SG0103494		Color changed(see photo "P")	
Green 100g(L30) / SG0103495		Color changed(see photo "P")	
Green 100g(L30) / SG0103496		Color changed(see photo "P")	
Green 100g(L30) / SG0103497		Color changed(see photo "P")	

--- See Next Page ---



## TEST REPORT

Mechanical & Hardgoods Laboratory

Report No. : TH50205A/2016

Page : 3 OF 5

– Picture(s) –



Photo "A" Appearance of sample -Yellow 25g(L65)



Photo "B" Appearance of sample -Purple 37g(L55)



Photo "C" Appearance of sample -Red 50g(L47)



Photo "D" Appearance of sample -Orange 75g(L35)



Photo "E" Appearance of sample -Green 100g(L30)



Photo "F" Test Equipment

--- See Next Page ---



## TEST REPORT

Mechanical & Hardgoods Laboratory

Report No. : TH50205A/2016

Page : 4 OF 5

– Picture(s) –



Photo "G" Drop test- -Yellow 25g(L65)



Photo "H" After testing - Yellow 25g(L65)



Photo "I" Drop test- Purple 37g(L55)



Photo "J" After testing - Purple 37g(L55)



Photo "K" Drop test- Red 50g(L47)



Photo "L" After testing - Red 50g(L47)

This document is issued by the Company subject to its General Conditions of Service printed overleaf, available on request or accessible at <http://www.sgs.com/en/Terms-and-Conditions.aspx> and, for electronic format documents, subject to Terms and Conditions for Electronic Documents at <http://www.sgs.com/en/Terms-and-Conditions/Terms-e-Document.aspx>. Attention is drawn to the limitation of liability, indemnification and jurisdiction issues defined therein. Any holder of this document is advised that information contained hereon reflects the Company's findings at the time of its intervention only and within the limits of client's instruction, if any. The Company's sole responsibility is to its Client and this document does not exonerate parties to a transaction from exercising all their rights and obligations under the transaction documents. This document cannot be reproduced, except in full, without prior written approval of the Company. Any unauthorized alteration, forgery or falsification of the content or appearance of this document is unlawful and offenders may be prosecuted to the fullest extent of the law. Unless otherwise stated the results shown in this test report refer only to the sample(s) tested.

## TEST REPORT

Mechanical & Hardgoods Laboratory

Report No. : TH50205A/2016

Page : 5 OF 5

– Picture(s) –

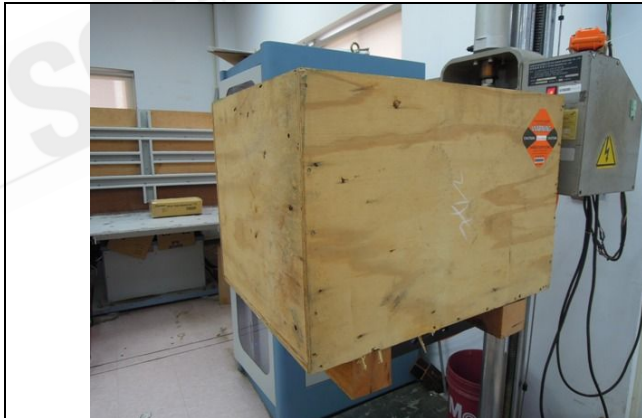


Photo “M” Drop test- Orange 75g(L35)



Photo “N” After testing - Orange 75g(L35)

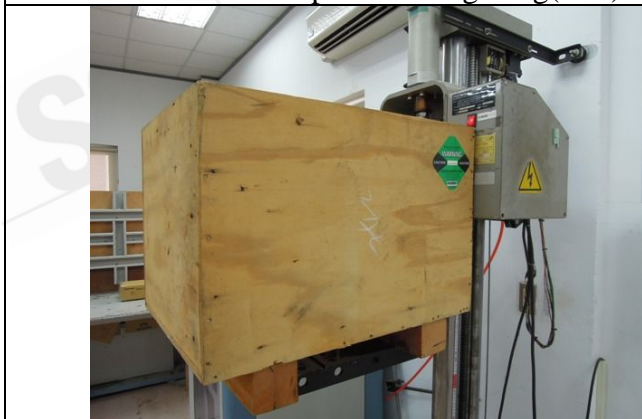


Photo “O” Drop test- Green 100g(L30)

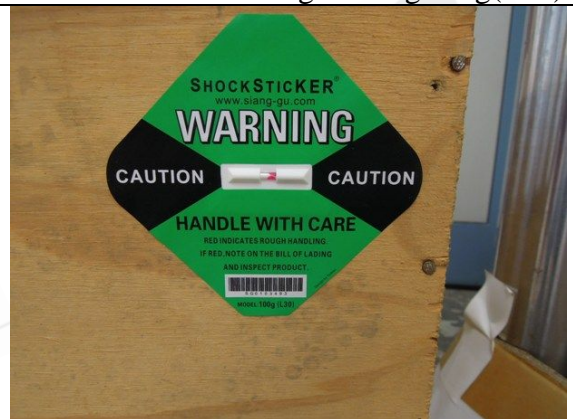


Photo “P” After testing - Green 100g(L30)

--- End of Report ---



**Sample Photo:**



SGS authenticate the photo on original report only

\*\*\*End of Report\*\*\*

This document is issued by the Company subject to its General Conditions of Service printed overleaf, available on request or accessible at [http://www.sgs.com/terms\\_and\\_conditions.htm](http://www.sgs.com/terms_and_conditions.htm) and, for electronic format documents, subject to Terms and Conditions for Electronic Documents at [www.sgs.com/terms\\_e-document.htm](http://www.sgs.com/terms_e-document.htm). Attention is drawn to the limitation of liability, indemnification and jurisdiction issues defined therein. Any holder of this document is advised that information contained hereon reflects the Company's findings at the time of its intervention only and in the limits of Client's instructions, if any. The Company's sole responsibility is to its Client and this document does not exonerate parties to a transaction from exercising all their rights and obligations under the transaction documents. This document cannot be reproduced except in full, without prior written approval of the Company. Any unauthorized alteration, forgery or falsification of the content or appearance of this document is unlawful and offenders may be prosecuted to the fullest extent of the law. Unless otherwise stated the results shown in this test report refer only to the sample(s) tested and such sample(s) are retained for 30 days only.





# Poliedro

GREEN PACKAGING SOLUTIONS

---

*Progettazione, ricerca e sviluppo imballaggi*  
*Design, research and development of packaging*

---